



HAL
open science

Earthquake-related tsunami archives based on sediments from coastal lagoons in the Lesser Antilles

Stefano Fabbri, Pierre Sabatier, Raphael Paris, Maude Biguenet, Simon
Falvard, Nathalie Feuillet, Guillaume Saint-Onge, Eric Chaumillon

► To cite this version:

Stefano Fabbri, Pierre Sabatier, Raphael Paris, Maude Biguenet, Simon Falvard, et al.. Earthquake-related tsunami archives based on sediments from coastal lagoons in the Lesser Antilles. *Past Global Changes Magazine*, 2024, 32 (1) (Paleo)-Earthquake and -Tsunami Science, 32 (1), pp.34-35. 10.22498/pages.32.1.34 . hal-04883218

HAL Id: hal-04883218

<https://univ-rochelle.hal.science/hal-04883218v1>

Submitted on 13 Jan 2025

HAL is a multi-disciplinary open access archive for the deposit and dissemination of scientific research documents, whether they are published or not. The documents may come from teaching and research institutions in France or abroad, or from public or private research centers.

L'archive ouverte pluridisciplinaire **HAL**, est destinée au dépôt et à la diffusion de documents scientifiques de niveau recherche, publiés ou non, émanant des établissements d'enseignement et de recherche français ou étrangers, des laboratoires publics ou privés.



Distributed under a Creative Commons Attribution 4.0 International License

Earthquake-related tsunami archives based on sediments from coastal lagoons in the Lesser Antilles

Stefano C. Fabbri^{1,2,3,4}, P. Sabatier¹, R. Paris⁵, M. Biguenet^{1,6}, S. Falvard⁵, N. Feuillet², G. St-Onge³ and E. Chaumillon⁶

In cupateme earum quo te quatur ra pro occaborrorum illabo. Nem dolupti temolup tature, ullesequo eicit in rat iunt eosam nulparc itibus, sape con cus et, simi, ommoluptat ditatur seque sit omnihitibus aperferum lit pro incidet il int.

Around 12% of the global population, more than 898 million people in 2020, reside in low-lying coastal areas (≤ 10 m above sea level; Reinmann et al. 2023) that are vulnerable to rising sea level and natural hazards such as hurricanes and tsunamis (MacManus et al. 2021). To prepare for these threats, we must determine the recurrence and intensity of such events beyond instrumental and historical records. Sediment deposits, serving as natural archives, provide vital insights into past tsunamis (e.g. Costa and Andrade 2020) and hurricanes (e.g. Wallace et al. 2021), which are essential for accurate hazard assessment. Coastal lagoon systems are an ideal event archive due to i) their excellent preservation potential as a natural sediment sink, ii) the presence of a sandy barrier separating the ocean from the sink, and acting as a filter for extreme-wave events (EWEs), and iii) their brackish origin, allowing the preservation of inland-mobilized material related to tsunami backwash. Our study investigated sediment cores in coastal lagoons on two Caribbean islands (Saint Martin and Scrub Island) in the Lesser Antilles (Fig. 1).

Earthquake, tsunami and hurricane hazards in the Lesser Antilles

The volcanic arc along the Lesser Antilles was formed by the subduction of the North American Plate under the Caribbean Plate at a rate of 2 cm/yr (Fig. 1a). Although this is one of the most seismically quiet subduction zones worldwide (Cordrie et al. 2022), the area was struck by notable moment magnitudes (M_w) 7 to 8 seismic events, affecting the Caribbean islands over the last 300 years (Feuillet et al. 2011). In addition to intense ground shaking during earthquakes, events in 1843, 1867, 1969, 1985, and 2004 CE generated tsunamis (Cordrie et al. 2022). Historical records and sediment analysis also suggest that the transatlantic Lisbon tsunami of 1755 CE reached the Lesser Antilles, causing tsunami wave heights of more than 2 m, as supported by numerical models (Roger et al. 2011). Apart from earthquakes and tsunamis, the Lesser Antilles islands are also prone to hurricanes, as they are located in the Atlantic hurricane belt. The area of Scrub Island and Saint Martin was struck by 14 hurricanes between 1850 and 2017 CE (NOAA 2023) within a 40 km radius (Fig. 1f). Saint Martin was directly hit by the Category 5 Hurricane "Irma" in September 2017; the strongest hurricane that ever formed in the Atlantic zone in historical times (Cangialosi et al. 2018) and that broke several

meteorological-based records (Fig. 1f). This has spurred research into historical tsunami and hurricane hazards, nurturing efforts to improve our understanding of EWE recurrence intervals and coastal flooding.

Methodology for tsunami-and-hurricane deposit analysis

We performed a combination of sedimentological, geochemical, and physical analyses targeting sandy EWE layers for identification and characterization (see Biguenet et al. 2021 and Fabbri et al. 2023 for more details). Furthermore, the cores underwent Loss of Ignition (LOI) and grain-size analyses, which allowed for the identification of variations in grain size, and specific end members. Additionally, geochemical analysis using X-ray Fluorescence (XRF) was conducted to determine major and trace element contents. X-ray computed microtomography (micro-CT) was used to characterize the sedimentary fabric of EWE deposits (Biguenet et al. 2022; Fabbri et al. 2023). To obtain age constraints on the sediment cores, we developed a chronology based on short-lived radionuclides and radiocarbon ages.

Extreme-wave-event identification and characterization

Sedimentological observations and grain-size analysis enabled the identification and distinction of two sediment facies. Facies 1 (F1) is characterized by fine-grained sediment with a silty matrix rich in organic matter (Fig. 2). It contains ~20% organic matter, one-third silicates, and a carbonate content between 35% (Scrub Island) and 48% (Saint Martin), reflecting a setting with very low energy levels, and mirroring the lagoon's background sedimentation. In contrast, Facies 2 (F2) comprises significantly coarser sediments, predominantly consisting of fine to very coarse sands. F2 is dominated by carbonates, constituting ~80% at Saint Martin and 40% at Scrub Island, with minor contributions of organic matter. F2's coarse sandy composition, marked by elevated Ca/Fe and Sr/Br ratios, indicates significant marine-sediment input and suggests high-energy transport processes that can erode and resuspend background sediment. Shells and their fragments, rich in Ca or Sr, denote marine influence, while Br and Fe reflects organic matter from the lagoon or land input, respectively. Both ratios represent

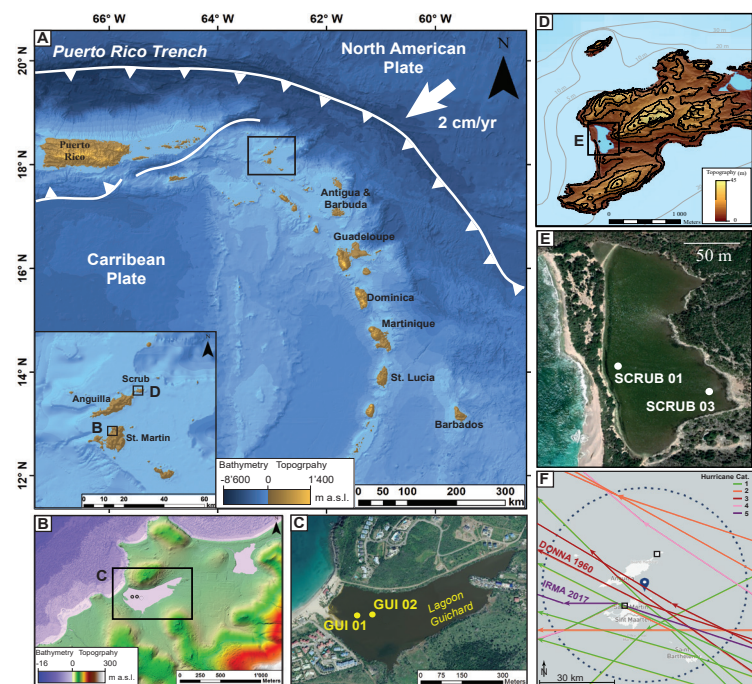


Figure 1: (A) Overview of the Lesser Antilles tectonic setting (modified after Biguenet et al. 2021). Inset: Overview of Saint Martin, Scrub Island and neighboring islands showing the investigated coastal lagoons (black squares). The bathymetry and topographic digital elevation model derived from SHOM (2018) for (B) Saint Martin and (C) Scrub Island. Satellite images of the coastal lagoon from (D) Saint Martin and (E) Scrub Island with its sand barriers. (F) Historical hurricane tracks (1850–2017) passing within 40 km (blue dashed circle) of the study area (NOAA 2023).

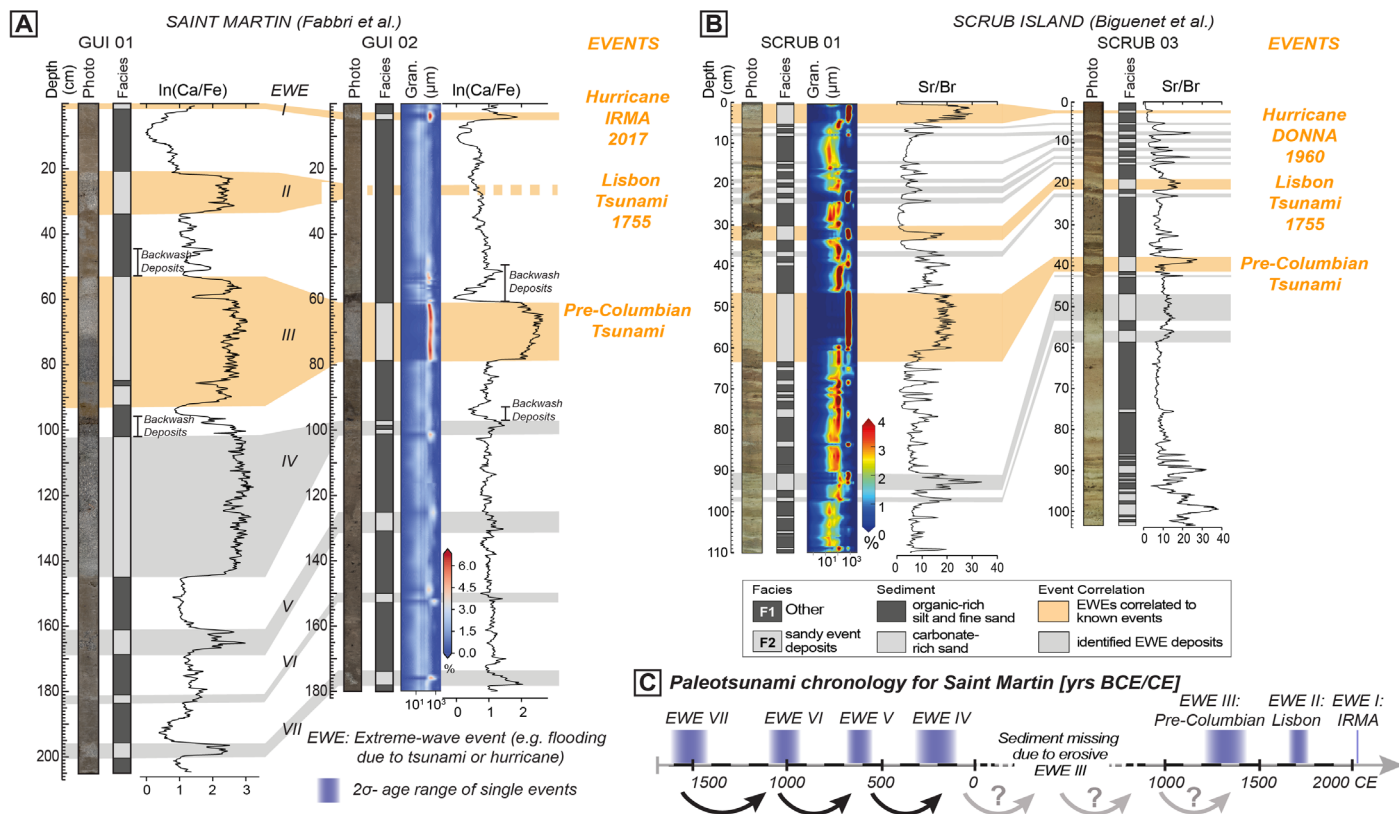


Figure 2: Core-to-core correlation of extreme-wave-event (EWE) deposits on (A) Saint Martin and (B) Scrub Island. Photograph, log, sediment facies, grain size and Ca/Fe and Sr/Br ratios shown for event identification. (C) Paleotsunami chronology for Saint Martin with a 400–500 year recurrence interval over the last 3500 years.

marine input equally well. Therefore, F2 is interpreted as the facies that likely results from EWEs. Some of the deposits right above the F2 layers (e.g. EWE III) show a geochemical signal rich in fine siliciclastic sediment with organic matter that likely corresponds to backwash deposits (Fig. 2a, b).

The EWE deposits characterized by F2 were of primary interest for cross-core correlation. The thickness of F2 layers decreases landward from GUI 01 to 02 at Saint Martin and SCRUB 01 to 03 at Scrub Island, supporting a marine origin of the deposits. Micro-CT-derived sedimentary fabric of event deposits reveals the spatial and geometrical arrangement of their sand grains, offering insights into flow direction and transport medium strength during deposition. A bimodal low-angle fabric dominated the Pre-Columbian tsunami deposit on both islands, distinguishable from the uni- and multimodal fabric of other EWEs at these sites (Fig. 2). While there is no unique proxy to distinguish between tsunami and hurricane deposits, our recent results show that paleo-flow reconstruction based on micro-CT data may resolve this challenge in the near future.

The recurrence of extreme-wave events

We have identified a total of seven and 25 EWE layers over the last 3500 and 1600 years at Saint Martin and Scrub Island, respectively (Fig. 2). Considering the very small deposit thickness of 1–2 cm of the category 5 Hurricane Irma at Saint Martin, and the lack of backwash material, older EWEs with thicker deposits must likely be of tsunamigenic origin in this lagoon. This is also supported by CT-derived sedimentary fabric, allowing for a tentative paleotsunami chronology for the island (Fabbri et al. 2023). Moreover, geochemical

data (Biguenet et al. 2021) and sedimentary fabric (Biguenet et al. 2022) enabled the identification of two tsunamis among the 25 EWEs on Scrub Island. Scrub Island appears to respond more sensitively to EWEs (including some historic events), compared to the more sheltered Saint Martin lagoon, which is less exposed to the open ocean.

Between 1500 and 0 yr cal BCE, paleotsunamis occurred every 400 to 500 years on Saint Martin (Fig. 2c). The absence of events between 0 and 1350 yr cal CE is likely due to the extensive erosion caused by the Pre-Columbian tsunami, also identified on Scrub Island, and at the regional scale (Cordrie et al. 2022), emphasizing its destructive force. Engel et al. (2016) reported a possible minor event at ~450 yr cal CE, and a major paleotsunami at ~950 yr cal CE, the former observed on Barbados, Yucatan (Mexico), Anguilla and Scrub Island, potentially filling the chronological void. This allows for two potential hypotheses: (1) A regular seismic cycle of strong tsunamigenic earthquakes every 400 to 500 years with a hiatus due to erosion; or (2) Clusters of megathrust earthquakes, referred to as "super seismic cycles", known from many subduction zones and strike-slip faults worldwide (Philibosian and Meltzner 2020), assuming a phase of seismic quiescence instead of a hiatus.

ACKNOWLEDGEMENTS

This work was supported by the Institut France-Québec maritime, the LABEX UnivEarthS project, the Interreg Caraïbes PREST, FEDER (European Community program) and was part of the ANR CARQUAKES project.

AFFILIATIONS

¹EDYTEM, Université Savoie Mont-Blanc, CNRS, Le Bourget du Lac, France

²Université de Paris, Institut de physique du globe de Paris, CNRS, France

³Institut des sciences de la mer de Rimouski (ISMER), Canada Research Chair in Marine Geology, Université du Québec à Rimouski and GEOTOP, Rimouski, Canada

⁴Institute of Geological Sciences & OCCR, University of Bern, Switzerland

⁵LMV, Université Clermont Auvergne, CNRS, IRD, OPGC, Clermont-Ferrand, France

⁶La Rochelle Université, CNRS, LIENSs, La Rochelle, France

CONTACT

Stefano C. Fabbri: stefano.fabbri@unibe.ch

REFERENCES

- Biguenet M et al. (2021) *Sediment Geol* 412: 105806
 Biguenet M et al. (2022) *Mar Geol* 450: 106864
 Cangialosi JP et al. (2018) NOAA and National Hurricane Center, 111 pp
 Cordrie L et al. (2022) *Earth Sci Rev* 228: 104018
 Costa PJM, Andrade C (2020) *Sedimentology* 67: 1189–1206
 Engel M et al. (2016) *Earth Sci Rev* 163: 260–296
 Fabbri et al. (2023) 21st Swiss Geoscience Meeting, Mendrisio, Switzerland
 Feuilleux N et al. (2011) *J Geophys Res Solid Earth* 116: B10308
 MacManus K et al. (2021) *Earth Syst Sci Data* 13: 5747–5801
 NOAA, National Oceanic and Atmospheric Administration (2020), Historical Hurricane Tracks
 Philibosian B, Meltzner AJ (2020) *Quat Sci Rev* 241(1): 106390
 Reimann L et al. (2023) *Cambridge Prisms: Coastal Futures* 1 (e14): 1–12
 Roger J et al. (2011) *Pure Appl Geophys* 168: 1015–1031
 SHOM (2018). MNT bathymétrique de façade de Saint-Martin et Saint-Barthélemy (Projet Homonim)
 Wallace et al. (2021) *J Geophys Res Letter* 48(1): e2020GL011145